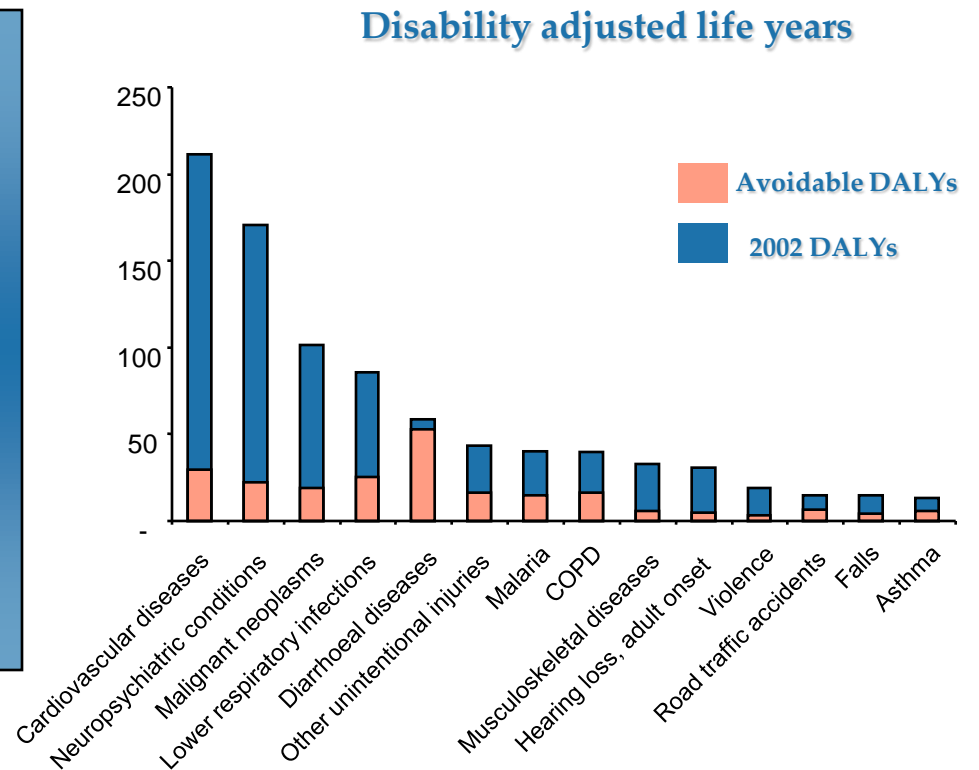
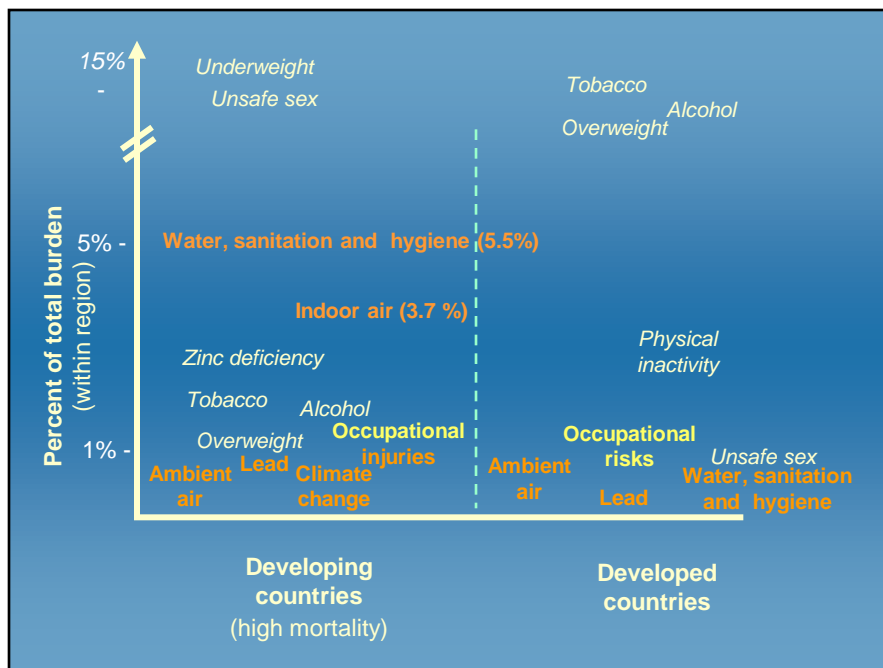


# Preventing Unhealthy Decisions

**Dr Maria Neira**  
**Director,**  
**Public Health and Environment**  
**World Health Organization**

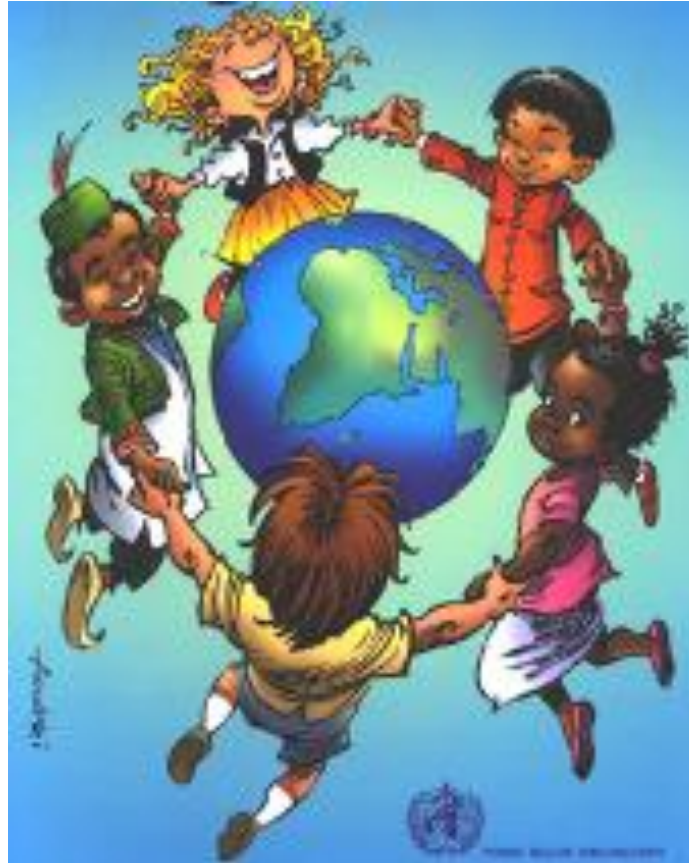


# 25% of the global burden of disease can be prevented through interventions on the environment



# *Globalization provides both challenges and opportunities for protecting and promoting workers' health*

---



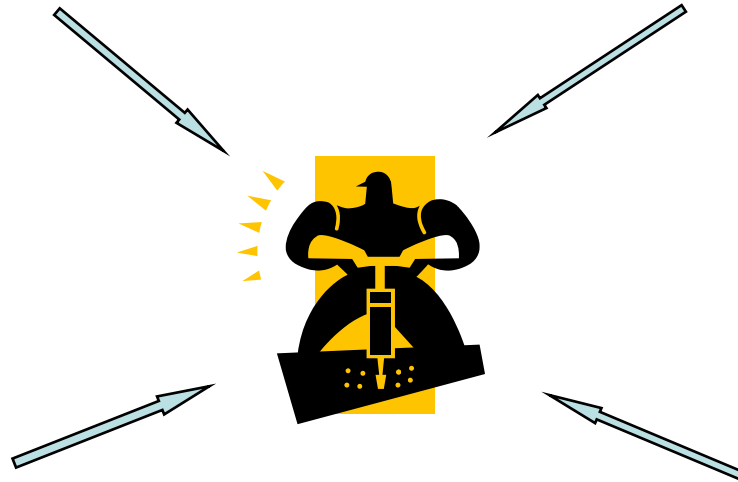
# What determines workers health?

## Working environment

- Mechanical
- Physical
- Chemical
- Biological
- Ergonomic
- Psycho-social risks

## Social factors

- occupational status, employment conditions
- income
- inequities in gender, race, age, residence etc.



## Work-related health practices

- individual risk-taking behaviour
- physical exercise, sedentary work
- diet and nutrition
- unhealthy habits – smoking, alcohol

## Access to health services:

- preventive occupational health services
- specialized curative care and rehabilitation
- health and accident insurance

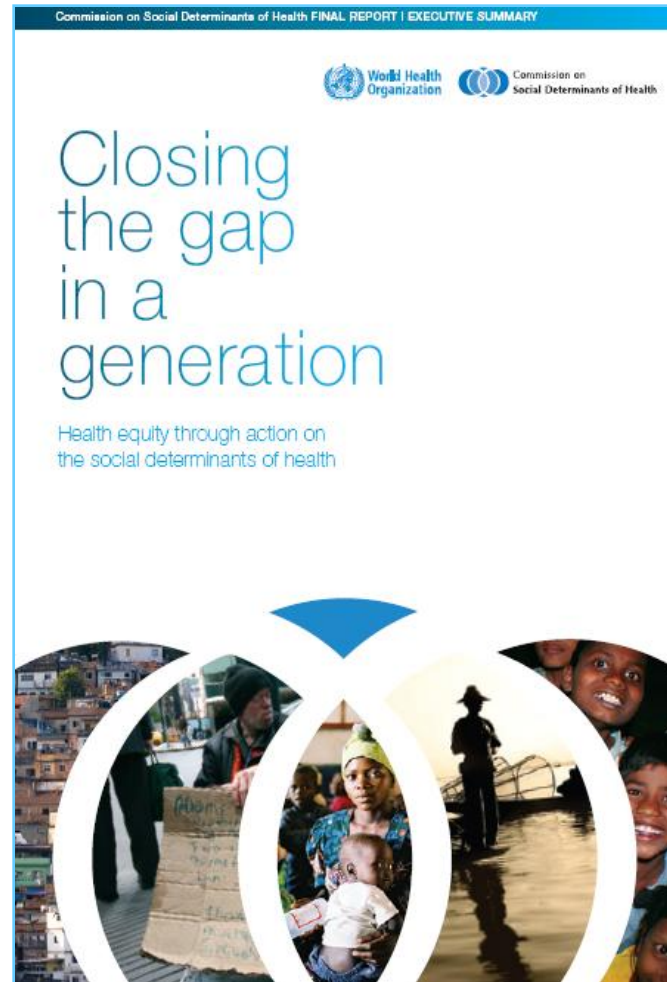
# *WHO Global Plan of Action on Workers' Health?*

---

- **To devise and implement policy instruments on workers' health**
- **To protect and promote health at the workplace**
- **To improve the performance of and access to occupational health services**
- **To provide and communicate evidence for action and practice**
- **To incorporate workers' health into other policies**

# *Social determinants of health – full and fair employment and decent work*

---



# *Bringing primary health care as close as possible to where people work*

---



# *Global financial crisis – a threat to workers' health, an emerging humanistic culture*

---



EP

# *Climate change – workers' health in adaptation and mitigation strategies*

---



LHIL/Sudipto Das