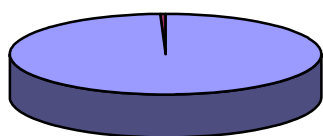




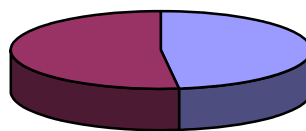
INFORME DE LAS DECLARACIONES DE COSECHA PRESENTADAS
CAMPAÑA 2009

TOTAL EN LA COMUNIDAD AUTÓNOMA (Kilogramos) (2009)

TIPO UVA	Nº DECLARACIONES PRESENTADAS	NEGRA Kgs	BLANCA Kgs	TOTAL Kgs
APTO V.C.P.R.D.	5143	4.973.484	5.421.326	10.394.810
MESA	32	63.614	1.351	64.965
TOTAL	5175	5.037.098	5.422.677	10.459.775



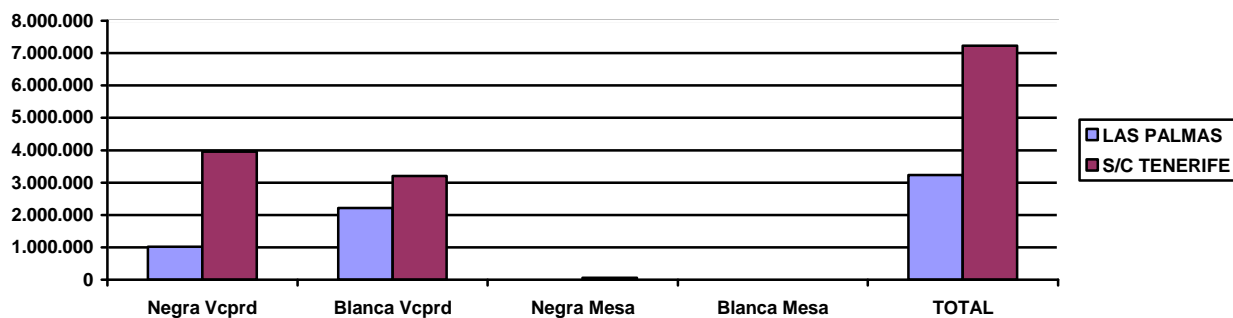
■ TOTAL VCPRD
■ TOTAL MESA



■ TOTAL NEGRA
■ TOTAL BLANCA

RESUMEN DE LA COSECHA DISTRIBUIDAS POR PROVINCIAS (Kilogramos) (2009)

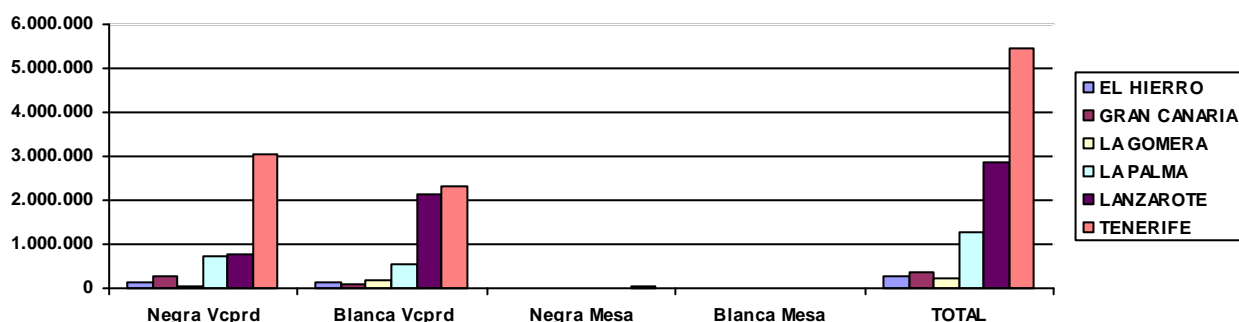
PROVINCIA	DECLARACIONES PRESENTADAS	Negra Vcprd	Blanca Vcprd	Negra Mesa	Blanca Mesa	TOTAL
LAS PALMAS	1.569	1.019.467	2.212.890	0	0	3.232.356
S/C TENERIFE	3.606	3.954.017	3.208.436	63.614	1.351	7.227.419
TOTAL	5.175	4.973.484	5.421.326	63.614	1.351	10.459.775





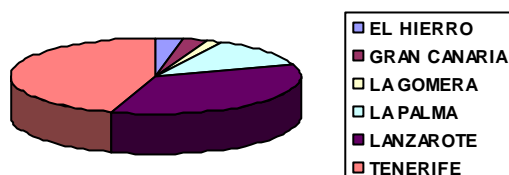
RESUMEN DE LA COSECHA DISTRIBUIDAS POR ISLAS (Kilogramos) (2009)

ISLA	DECLARACIONES PRESENTADAS	Negra Vcprd	Blanca Vcprd	Negra Mesa	Blanca Mesa	TOTAL
EL HIERRO	201	135.156	153.164	0	0	288.320
GRAN CANARIA	132	266.669	95.810	0	0	362.479
LA GOMERA	163	35.399	175.238	0	0	210.636
LA PALMA	873	717.431	561.588	0	0	1.279.020
LANZAROTE	1.437	752.798	2.117.079	0	0	2.869.877
TENERIFE	2.369	3.066.032	2.318.446	63.614	1.351	5.449.443
TOTAL	5.175	4.973.484	5.421.326	63.614	1.351	10.459.775

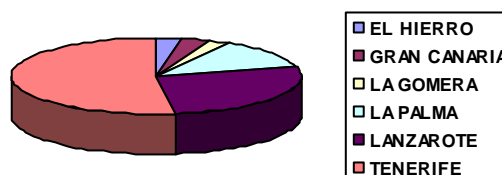


ISLA	DECLARACIONES PRESENTADAS	Superficie (Has)	Uva Negra	Uva Blanca	TOTAL	Rendimiento (Kg/Has)
EL HIERRO	201	136,1809	135.156	153.164	288.320	2.117
GRAN CANARIA	132	138,8986	266.669	95.810	362.479	2.610
LA GOMERA	163	75,5198	35.399	175.238	210.636	2.789
LA PALMA	873	560,2897	717.431	561.588	1.279.020	2.283
LANZAROTE	1.437	1.641,3488	752.798	2.117.079	2.869.877	1.748
TENERIFE	2.369	2.088,6607	3.129.646	2.319.797	5.449.443	2.609
TOTAL	5.175	4.640,8985	5.037.098	5.422.677	10.459.775	m 2.359

Distribución de la superficie utilizada



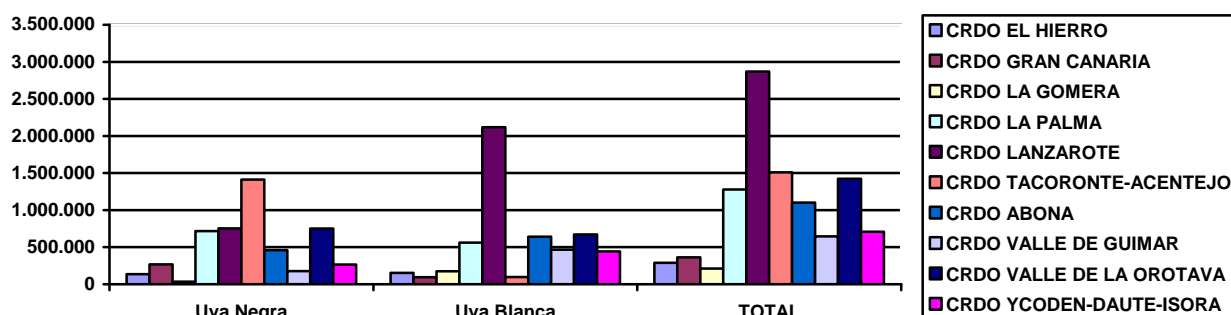
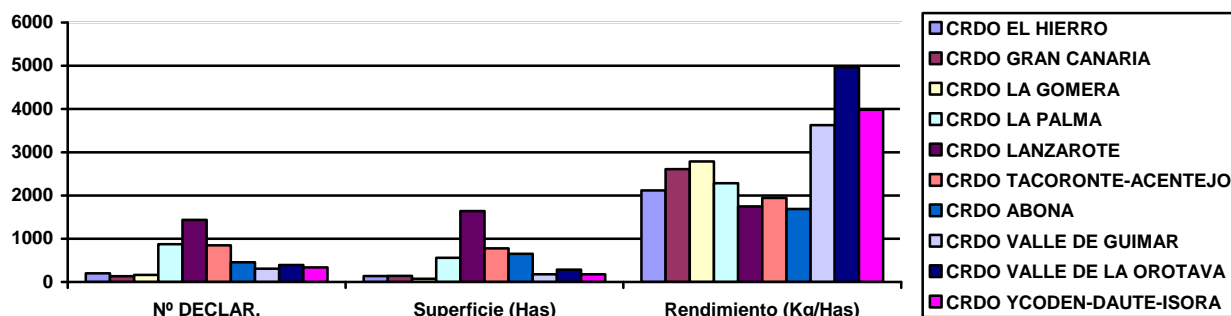
Distribución de la cosecha (total)





RESUMEN DE LA COSECHA EN LOS CONSEJOS REGULADORES (Kilogramos) (2009)

ORGANISMO	Nº DECLAR.	Superficie (Has)	Uva Negra	Uva Blanca	TOTAL	Rendimiento (Kg/Has)
CRDO EL HIERRO	201	136,1809	135.156	153.164	288.320	2.117
CRDO GRAN CANARIA	132	138,8986	266.669	95.810	362.479	2.610
CRDO LA GOMERA	163	75,5198	35.399	175.238	210.636	2.789
CRDO LA PALMA	873	560,2897	717.431	561.588	1.279.020	2.283
CRDO LANZAROTE	1.437	1.641,3488	752.798	2.117.079	2.869.877	1.748
CRDO TACORONTE-ACENTEJO	846	776,7317	1.412.608	96.595	1.509.203	1.943
CRDO ABONA	455	652,3000	460.039	641.157	1.101.196	1.688
CRDO VALLE DE GUIMAR	308	177,7344	177.951	466.788	644.739	3.628
CRDO VALLE DE LA OROTAVA	392	286,1697	750.582	671.472	1.422.053	4.969
CRDO YCODEN-DAUTE-ISORA	336	177,5743	264.852	442.434	707.286	3.983
TOTAL	5.143	4.622,7479	4.973.484	5.421.326	10.394.810	2.776

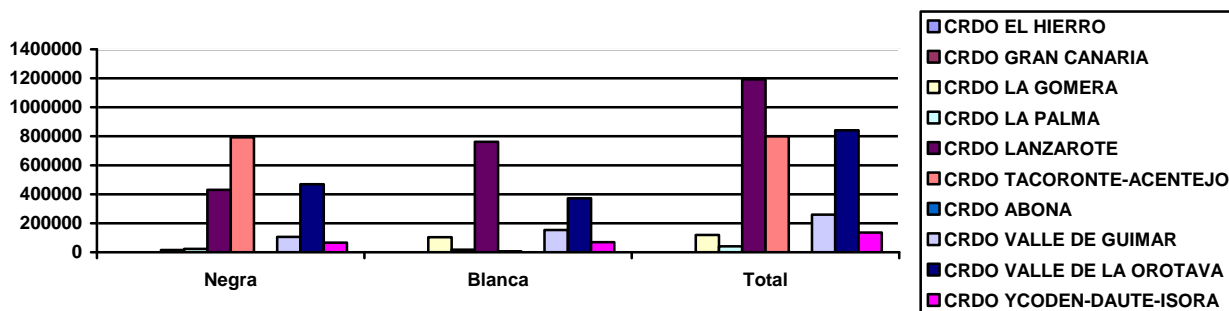




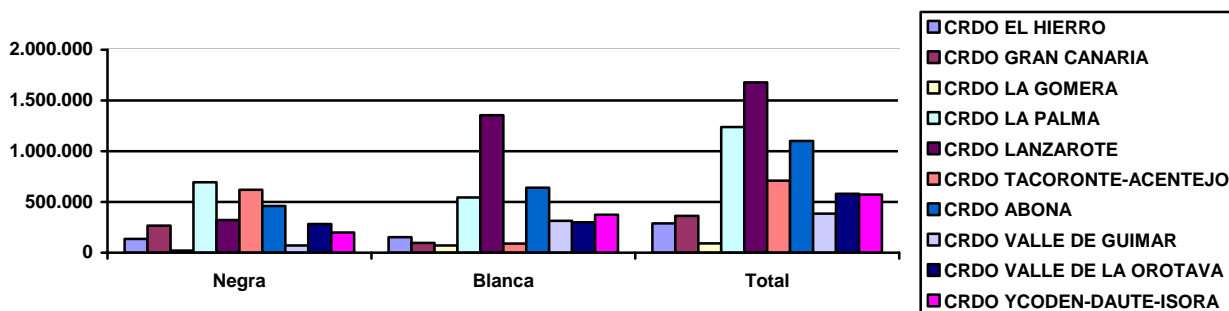
DESTINO DE LA COSECHA EN LOS CONSEJOS REGULADORES (Kilogramos) (2009)

ORGANISMO	ENTREGADAS A BODEGAS VCPRD			AUTOCONSUMO		
	Negra	Blanca	Total	Negra	Blanca	Total
CRDO EL HIERRO	135.156	153.164	288.320	0	0	0
CRDO GRAN CANARIA	266.669	95.810	362.479	0	0	0
CRDO LA GOMERA	20.374	71.433	91.806	15.025	103.805	118.830
CRDO LA PALMA	694.180	543.746	1.237.927	23.251	17.842	41.093
CRDO LANZAROTE	322.226	1.355.228	1.677.454	430.572	761.851	1.192.423
CRDO TACORONTE-ACENTEJO	619.671	89.654	709.326	792.937	6.941	799.878
CRDO ABONA	460.039	641.157	1.101.196	0	0	0
CRDO VALLE DE GUIMAR	71.614	313.313	384.927	106.337	153.475	259.812
CRDO VALLE DE LA OROTAVA	281.790	299.144	580.933	468.792	372.328	841.120
CRDO YCODEN-DAUTE-ISORA	198.750	373.094	571.844	66.102	69.340	135.442
TOTAL	3.070.468	3.935.744	7.006.212	1.903.016	1.485.582	3.388.598

Kilogramos destinados a autoconsumo 2009



Kilogramos entregados a bodegas VCPRD 2009





RESUMEN DEL RESTO DE LA COSECHA (Kilogramos) (2009)

ORGANISMO	Nº DECLAR.	Superficie (Has)	Uva Negra	Uva Blanca	TOTAL	Rendimiento (Kg/Has)
TACORONTE (EXT AGR)	32	18,1506	63.614	1.351	64.965	3.579
TOTAL	32	18,1506	63.614	1.351	64.965	3.579

