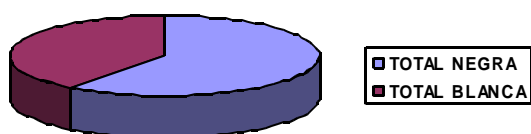
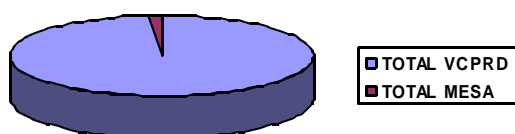


INFORME DE LAS DECLARACIONES DE COSECHA PRESENTADAS. CAMPAÑA 2011

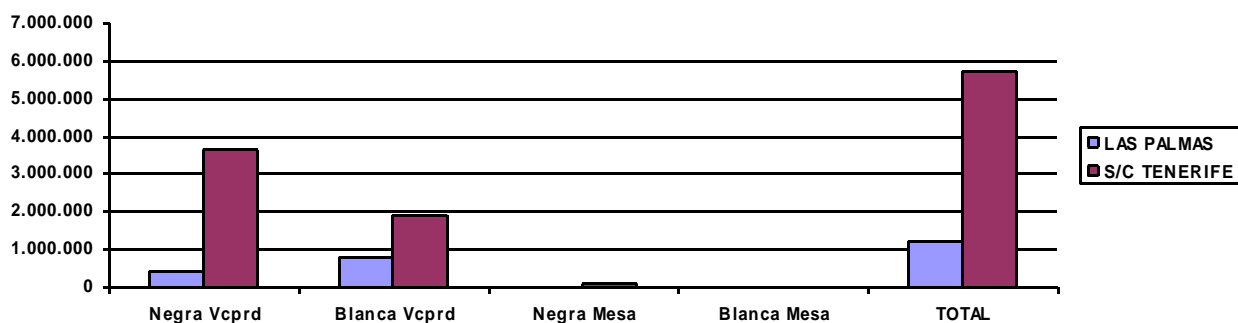
TOTAL EN LA COMUNIDAD AUTÓNOMA (Kilogramos) (2011)

TIPO UVA	Nº DECLARACIONES PRESENTADAS	NEGRA Kgs	BLANCA Kgs	TOTAL Kgs
APTO V.C.P.R.D.	4861	4.106.688	2.730.134	6.836.822
MESA	44	102.853	1.081	103.934
TOTAL	4905	4.209.541	2.731.215	6.940.756



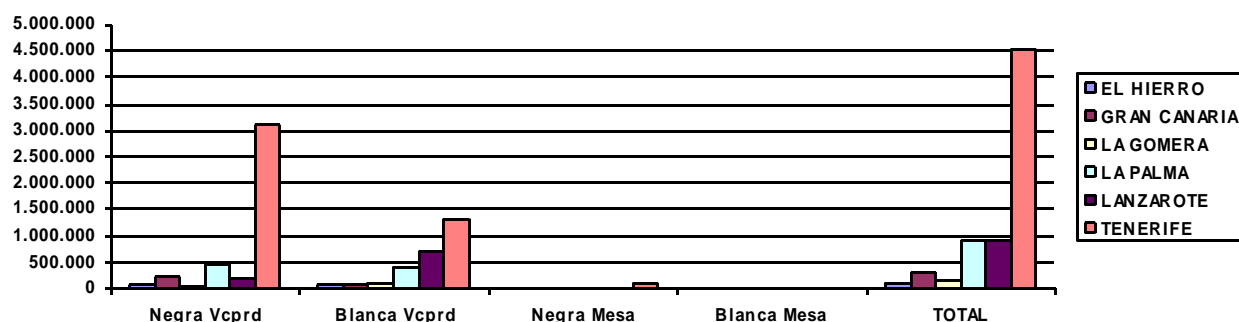
RESUMEN DE LA COSECHA DISTRIBUIDAS POR PROVINCIAS (Kilogramos) (2011)

PROVINCIA	DECLARACIONES PRESENTADAS	Negra Vcprd	Blanca Vcprd	Negra Mesa	Blanca Mesa	TOTAL
LAS PALMAS	1.515	423.776	799.613	0	0	1.223.389
S/C TENERIFE	3.390	3.682.912	1.930.521	102.853	1.081	5.717.367
TOTAL	4.905	4.106.688	2.730.134	102.853	1.081	6.940.756



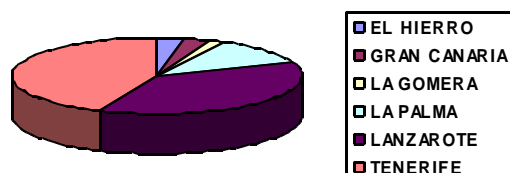
RESUMEN DE LA COSECHA DISTRIBUIDAS POR ISLAS (Kilogramos) (2011)

ISLA	DECLARACIONES PRESENTADAS	Negra Vcprd	Blanca Vcprd	Negra Mesa	Blanca Mesa	TOTAL
EL HIERRO	203	71.151	58.577	0	0	129.729
GRAN CANARIA	118	234.397	71.618	0	0	306.015
LA GOMERA	171	27.387	130.209	0	0	157.596
LA PALMA	831	463.926	430.546	0	0	894.472
LANZAROTE	1.397	189.379	727.995	0	0	917.374
TENERIFE	2.185	3.120.449	1.311.188	102.853	1.081	4.535.571
TOTAL	4.905	4.106.688	2.730.134	102.853	1.081	6.940.756

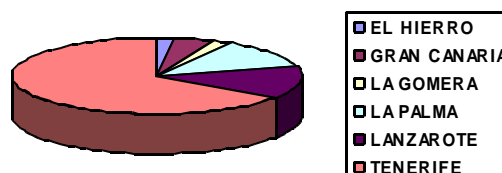


ISLA	DECLARACIONES PRESENTADAS	Superficie (Has)	Uva Negra	Uva Blanca	TOTAL	Rendimiento (Kg/Has)
EL HIERRO	203	138,2390	71.151	58.577	129.729	938
GRAN CANARIA	118	132,9607	234.397	71.618	306.015	2.302
LA GOMERA	171	80,4264	27.387	130.209	157.596	1.960
LA PALMA	831	511,2613	463.926	430.546	894.472	1.750
LANZAROTE	1.397	1.643,7767	189.379	727.995	917.374	558
TENERIFE	2.185	1.948,5261	3.223.302	1.312.269	4.535.571	2.328
TOTAL	4.905	4.455,1902	4.209.541	2.731.215	6.940.756	m 1.639

Distribución de la superficie utilizada

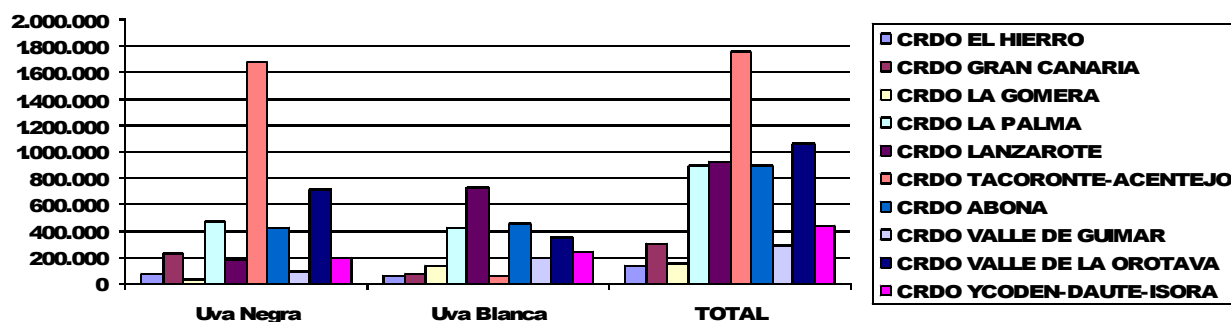
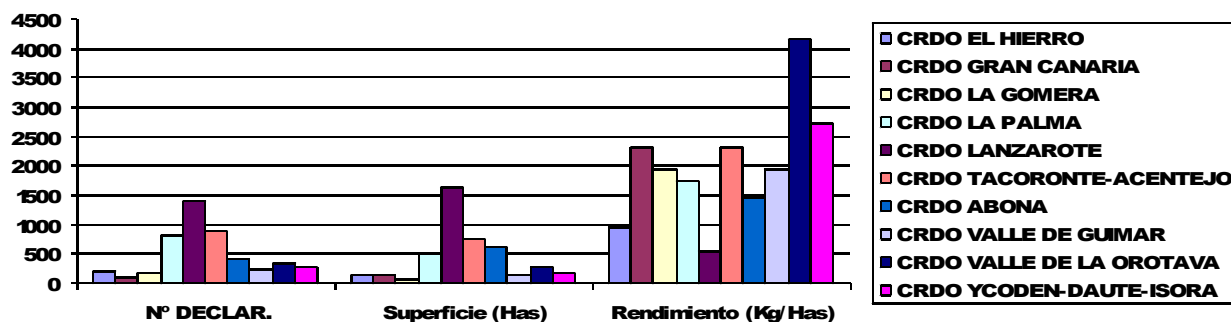


Distribución de la cosecha (total)



RESUMEN DE LA COSECHA EN LOS CONSEJOS REGULADORES (Kilogramos) (2011)

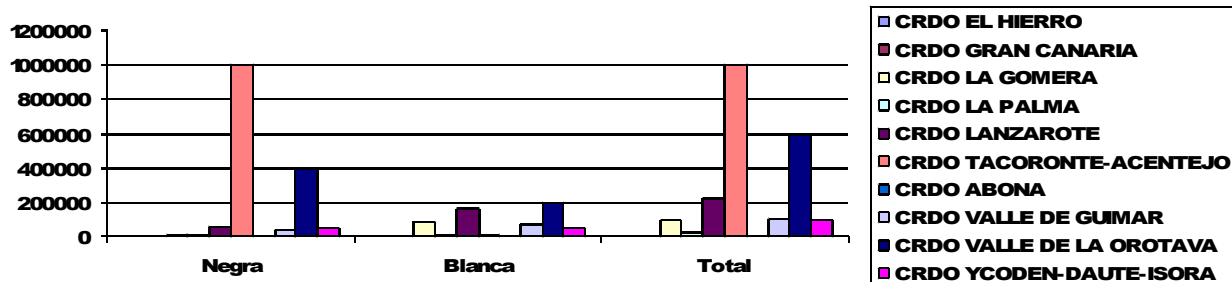
ORGANISMO	Nº DECLAR.	Superficie (Has)	Uva Negra	Uva Blanca	TOTAL	Rendimiento (Kg/Has)
CRDO EL HIERRO	203	138,2390	71.151	58.577	129.729	938
CRDO GRAN CANARIA	118	132,9607	234.397	71.618	306.015	2.302
CRDO LA GOMERA	171	80,4264	27.387	130.209	157.596	1.960
CRDO LA PALMA	831	511,2613	463.926	430.546	894.472	1.750
CRDO LANZAROTE	1.397	1.643,7767	189.379	727.995	917.374	558
CRDO TACORONTE-ACENTEJO	873	756,8791	1.687.274	62.953	1.750.227	2.312
CRDO ABONA	397	604,9062	430.431	459.851	890.282	1.472
CRDO VALLE DE GUMAR	247	146,5624	86.380	197.515	283.895	1.937
CRDO VALLE DE LA OROTAVA	341	257,6276	719.405	348.378	1.067.783	4.145
CRDO YCODEN-DAUTE-ISORA	283	160,1715	196.958	242.492	439.449	2.744
TOTAL	4.861	4.432,8109	4.106.688	2.730.134	6.836.822	m 2.012



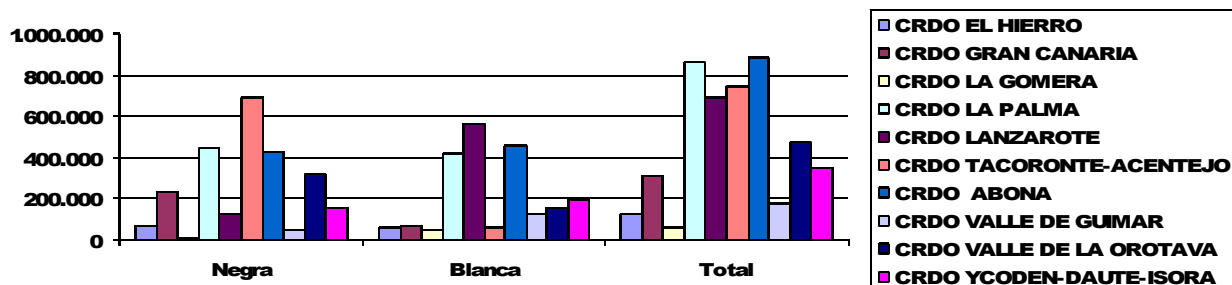
DESTINO DE LA COSECHA EN LOS CONSEJOS REGULADORES (Kilogramos) (2011)

ORGANISMO	ENTREGADAS A BODEGAS VCPRD			AUTOCONSUMO		
	Negra	Blanca	Total	Negra	Blanca	Total
CRDO EL HIERRO	71.151	58.577	129.729	0	0	0
CRDO GRAN CANARIA	234.397	71.618	306.015	0	0	0
CRDO LA GOMERA	13.497	45.588	59.085	13.890	84.622	98.512
CRDO LA PALMA	448.300	417.115	865.415	15.626	13.431	29.057
CRDO LANZAROTE	127.667	565.594	693.261	61.712	162.401	224.113
CRDO TACORONTE-ACENTEJO	691.062	56.371	747.433	996.212	6.582	1.002.794
CRDO ABONA	430.431	456.251	886.682	0	3.600	3.600
CRDO VALLE DE GUMAR	48.409	127.765	176.174	37.971	69.750	107.721
CRDO VALLE DE LA OROTAVA	323.717	151.301	475.018	395.688	197.077	592.765
CRDO YCODEN-DAUTE-ISORA	153.573	197.092	350.664	43.385	45.400	88.785
TOTAL	2.542.204	2.147.271	4.689.475	1.564.484	582.863	2.147.347

Kilogramos destinados a autoconsumo 2011



Kilogramos entregados a bodegas VCPRD 2011



RESUMEN DEL RESTO DE LA COSECHA (Kilogramos) (2011)

ORGANISMO	Nº DECLAR.	Superficie (Has)	Uva Negra	Uva Blanca	TOTAL	Rendimiento (Kg/Has)
TACORONTE (EXT AGR)	44	22,3793	102.853	1.081	103.934	4.644
TOTAL	44	22,3793	102.853	1.081	103.934	m 4.644

