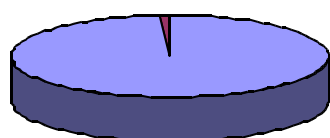


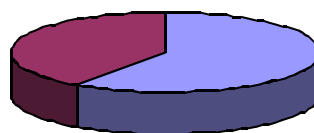
## INFORME DE LAS DECLARACIONES DE COSECHA PRESENTADAS. CAMPAÑA 2010

### TOTAL EN LA COMUNIDAD AUTÓNOMA (Kilogramos) (2010)

TIPO UVA	Nº DECLARACIONES PRESENTADAS	NEGRA Kgs	BLANCA Kgs	TOTAL Kgs
APTO V.C.P.R.D.	5138	5.011.831	3.444.087	8.455.918
MESA	34	86.231	2.027	88.258
<b>TOTAL</b>	<b>5172</b>	<b>5.098.062</b>	<b>3.446.114</b>	<b>8.544.176</b>



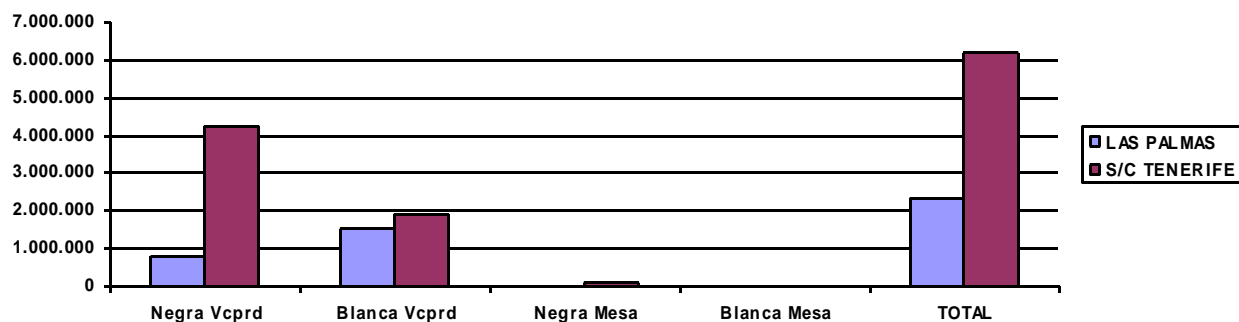
■ TOTAL VCPRD  
■ TOTAL MESA



■ TOTAL NEGRA  
■ TOTAL BLANCA

### RESUMEN DE LA COSECHA DISTRIBUIDAS POR PROVINCIAS (Kilogramos) (2010)

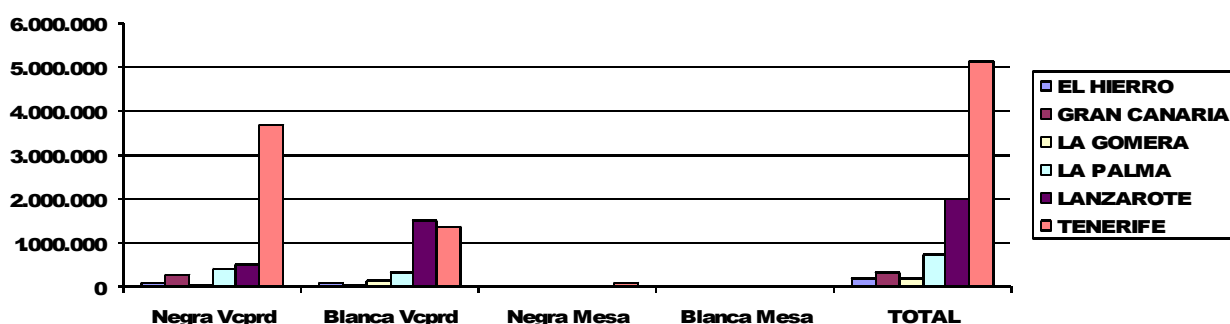
PROVINCIA	DECLARACIONES PRESENTADAS	Negra Vcprd	Blanca Vcprd	Negra Mesa	Blanca Mesa	TOTAL
LAS PALMAS	1.550	793.605	1.555.462	0	0	2.349.067
S/C TENERIFE	3.622	4.218.226	1.888.625	86.231	2.027	6.195.109
<b>TOTAL</b>	<b>5.172</b>	<b>5.011.831</b>	<b>3.444.087</b>	<b>86.231</b>	<b>2.027</b>	<b>8.544.176</b>





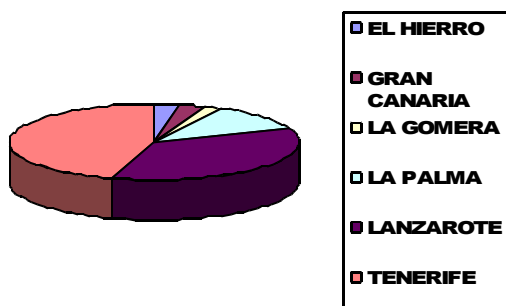
### RESUMEN DE LA COSECHA DISTRIBUIDAS POR ISLAS (Kilogramos) (2010)

ISLA	DECLARACIONES PRESENTADAS	Negra Vcprd	Blanca Vcprd	Negra Mesa	Blanca Mesa	TOTAL
EL HIERRO	192	94.397	86.604	0	0	181.001
GRAN CANARIA	133	277.674	59.193	0	0	336.867
LA GOMERA	164	29.277	137.847	0	0	167.124
LA PALMA	864	400.080	311.887	0	0	711.967
LANZAROTE	1.417	515.931	1.496.269	0	0	2.012.200
TENERIFE	2.402	3.694.472	1.352.287	86.231	2.027	5.135.017
<b>TOTAL</b>	<b>5.172</b>	<b>5.011.831</b>	<b>3.444.087</b>	<b>86.231</b>	<b>2.027</b>	<b>8.544.176</b>

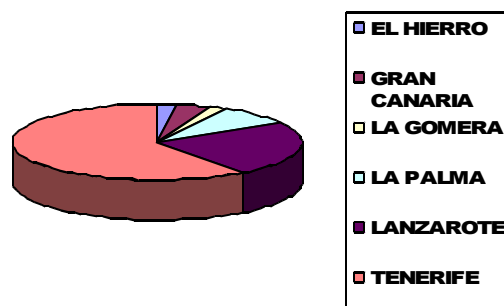


ISLA	DECLARACIONES PRESENTADAS	Superficie (Has)	Uva Negra	Uva Blanca	TOTAL	Rendimiento (Kg/Has)
EL HIERRO	192	130,1525	94.397	86.604	181.001	1.391
GRAN CANARIA	133	139,9584	277.674	59.193	336.867	2.407
LA GOMERA	164	78,2588	29.277	137.847	167.124	2.136
LA PALMA	864	531,8418	400.080	311.887	711.967	1.339
LANZAROTE	1.417	1.616,0781	515.931	1.496.269	2.012.200	1.245
TENERIFE	2.402	2.058,6506	3.780.703	1.354.314	5.135.017	2.494
<b>TOTAL</b>	<b>5.172</b>	<b>4.554,9402</b>	<b>5.098.062</b>	<b>3.446.114</b>	<b>8.544.176</b>	<b>m 1.835</b>

Distribución de la superficie utilizada



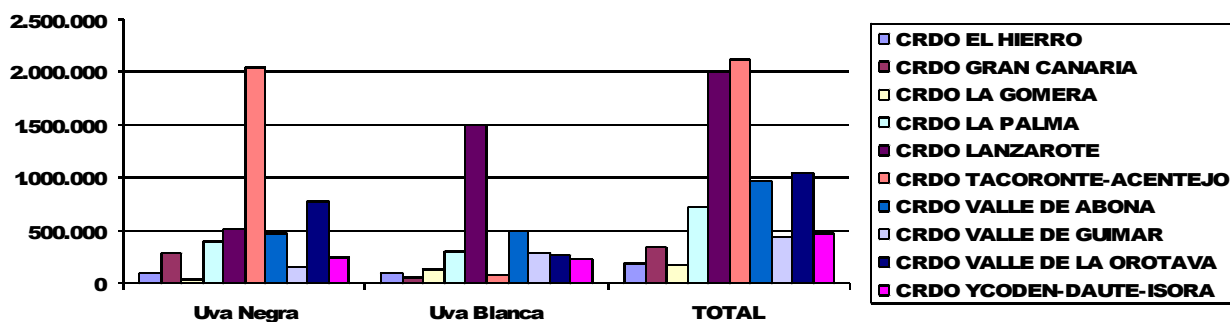
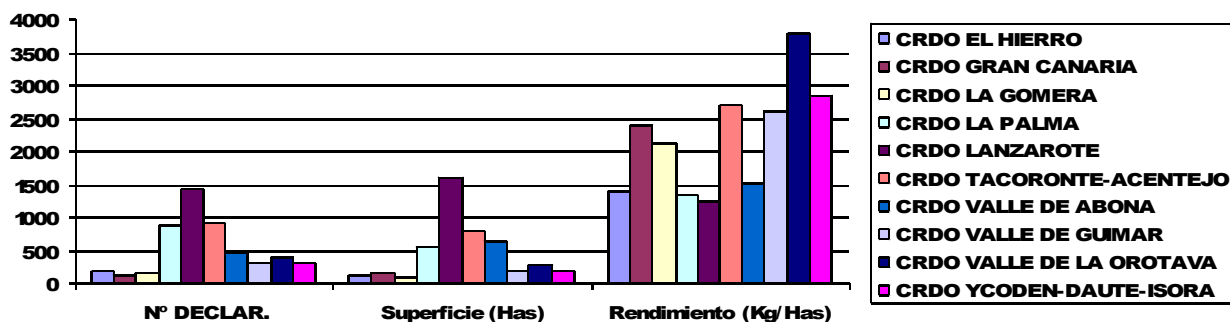
Distribución de la cosecha (total)





### RESUMEN DE LA COSECHA EN LOS CONSEJOS REGULADORES (Kilogramos) (2010)

ORGANISMO	Nº DECLAR.	Superficie (Has)	Uva Negra	Uva Blanca	TOTAL	Rendimiento (Kg/Has)
CRDO EL HIERRO	192	130,1525	94.397	86.604	181.001	1.391
CRDO GRAN CANARIA	133	139,9584	277.674	59.193	336.867	2.407
CRDO LA GOMERA	164	78,2588	29.277	137.847	167.124	2.136
CRDO LA PALMA	864	531,8418	400.080	311.887	711.967	1.339
CRDO LANZAROTE	1.417	1.616,0781	515.931	1.496.269	2.012.200	1.245
CRDO TACORONTE-A-CENTEJO	901	786,2836	2.047.759	70.203	2.117.961	2.694
CRDO ABONA	469	642,3863	475.379	499.349	974.728	1.517
CRDO VALLE DE GUIMAR	290	167,3750	155.129	282.383	437.513	2.614
CRDO VALLE DE LA OROTAVA	395	272,8591	771.643	263.782	1.035.425	3.795
CRDO YCODEN-DAUTE-ISORA	313	169,7004	244.563	236.570	481.132	2.835
<b>TOTAL</b>	<b>5.138</b>	<b>4.534,8940</b>	<b>5.011.831</b>	<b>3.444.087</b>	<b>8.455.918</b>	<b>m 1.835</b>

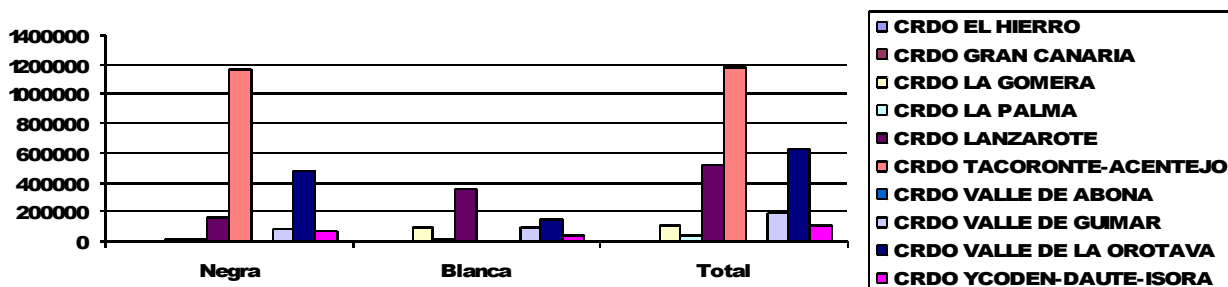




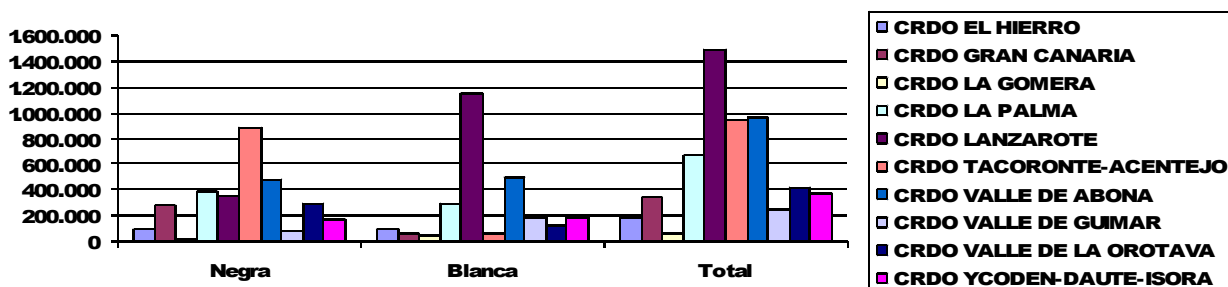
### DESTINO DE LA COSECHA EN LOS CONSEJOS REGULADORES (Kilogramos) (2010)

ORGANISMO	ENTREGADAS A BODEGAS VCPRD			AUTOCONSUMO		
	Negra	Blanca	Total	Negra	Blanca	Total
CRDO EL HIERRO	94.397	86.604	181.001	0	0	0
CRDO GRAN CANARIA	276.274	59.193	335.467	1.400	0	1.400
CRDO LA GOMERA	14.495	49.433	63.928	14.783	88.414	103.196
CRDO LA PALMA	381.267	293.705	674.972	18.813	18.182	36.995
CRDO LANZAROTE	349.882	1.147.773	1.497.655	166.049	348.496	514.545
CRDO TACORONTE-ACENTEJO	878.126	63.751	941.876	1.169.633	6.452	1.176.085
CRDO VALLE DE ABONA	473.929	496.349	970.278	1.450	3.000	4.450
CRDO VALLE DE GUIMAR	70.204	181.395	251.600	84.925	100.988	185.913
CRDO VALLE DE LA OROTAVA	294.551	118.509	413.061	477.091	145.273	622.364
CRDO YCODEN-DAUTE-ISORA	176.387	190.470	366.856	68.176	46.100	114.276
<b>TOTAL</b>	<b>3.009.511</b>	<b>2.687.183</b>	<b>5.696.694</b>	<b>2.002.320</b>	<b>756.905</b>	<b>2.759.224</b>

Kilogramos destinados a autoconsumo 2010



Kilogramos entregados a bodegas VCPRD 2010





### RESUMEN DEL RESTO DE LA COSECHA (Kilogramos) (2010)

ORGANISMO	Nº DECLAR.	Superficie (Has)	Uva Negra	Uva Blanca	TOTAL	Rendimiento (Kg/Has)
TACORONTE (EXT AGR)	34	20,0462	86.231	2.027	88.258	4.403
TOTAL	34	20,0462	86.231	2.027	88.258	m 4.403

